



Contents lists available at ScienceDirect

# Veterinary Immunology and Immunopathology

journal homepage: [www.elsevier.com/locate/vetimm](http://www.elsevier.com/locate/vetimm)



Short communication

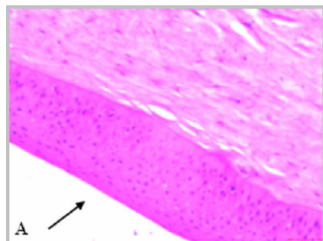
## Differential expression of toll-like receptor mRNA in selected tissues of goat (*Capra hircus*)

K.G. Tirumurugaan, S. Dhanasekaran, G. Dhinakar Raj\*, A. Raja, K. Kumanan, V. Ramaswamy<sup>1</sup>

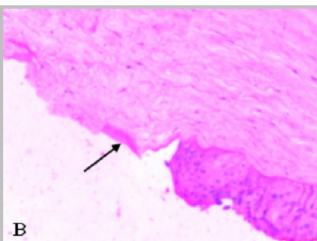
*Department of Animal Biotechnology, Madras Veterinary College, Tamil Nadu Veterinary and Animal Sciences University, Chennai 600007, India*

### Expression of TLR mRNA in the cornea of animals an immunologically privileged site ?

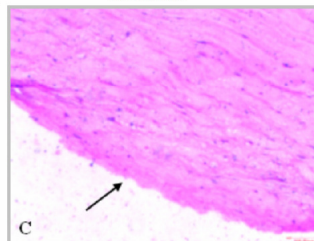
Corneal Epithelium - Intact



Corneal Epithelium - partially removed



Corneal Epithelium - Completely removed



- Sheep cornea – highest repertoire of TLR mRNAs
- TLR 3 and 4 low in buffalo, goats and bulls
- TLR10 low in all species

Veterinary Ophthalmology

Manuscript accepted

## Are they immunologically different ?

Barbari



Tellicherry



Kanni



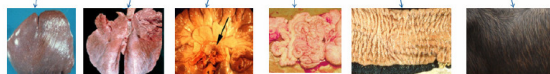
### Toda Buffalo



From birth to death in the shadow of the buffaloes – Toda

### Toda Vs Murrah

Are Toda buffaloes immunologically superior?  
If so do TLRs play a role?



Spleen Lung MLN Jejunum Rectum Skin